

Sigma
TOUCH

westomatic
make it happen



**BARISTA
QUALITY COFFEE,
FRESHLY BREWED
TEAS & INDULGENT
CHOCOLATES**

**BRANDED
GRAPHICS &
ADVERTISING
OPTIONS**

**19 inch
HD-TOUCH
SCREEN**

Sigma
TOUCH

THE ULTIMATE BEAN-TO-CUP VENDING SOLUTION

www.westomatic.com | 2025

Sigma TOUCH

Ground or instant coffee,
hot chocolate, freshly brewed or
instant tea and refreshing
cold drinks.

The Sigma Touch delivers the superb drinks standard that customers expect, along with a second-to-none user experience.

Touch Screen Innovation, Coffee Shop Quality

Attract customers with a gorgeous touch screen interface

Bring advertisers to your machine; host adverts for increased revenue

Cater to everyone with a huge beverage selection

Keep users coming back with impressive drinks quality

Save the planet by using your own mugs with the Sigma's cup sensor

Reduce costs with Sigma's built-in energy saving management software

Free audit software to download drink sales information to a USB drive

Single fresh brew, double fresh brew and whole bean models available



LATTE - HOT CHOCOLATE - CREAMICHOC - FRESHLY BREWED TEA

A huge range of customisable drinks options

Customisation



Customise screen branding and video advertisements. Why not promote drinks and benefit from additional advertising revenue?

Retail Side Pod



Add a retail-friendly side pod with cup slots and condiments holders to your machine, in the branding of your choice.

Payment Systems

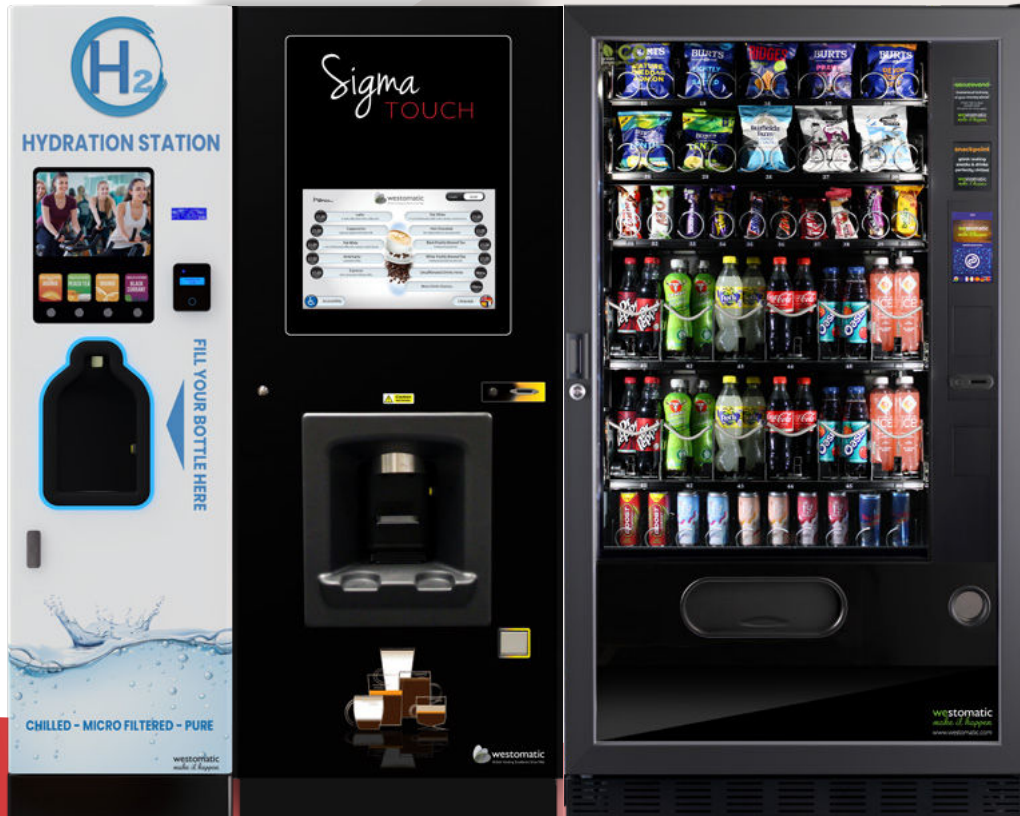


Cash, card or contactless payments, the Sigma Touch can be configured to support most payment methods.

High capacity for fewer operator visits and happy customers

THE COMPLETE COMBO

Why not offer your customers the full package by combining their free standing hot drinks machine with a snack machine and/or a bottle vendor!



DESIGNED AND MADE IN BRITAIN

VISIT WWW.WESTOMATIC.COM



ITEM	DESCRIPTION	AS STANDARD
Audit capability	USB	Standard
	Wireless telemetry	Standard
Automatic cup dispenser	150 ml, 180 ml or 250 ml cup dispenser	Standard
Cup sensor	Cup sensor & stand (for use of own cup or jug)	Standard
	Red LED cup display lighting	Standard
Advertising Screen	19" Screen allowing advertising - still or video	Standard
Menu selection	19-inch touch sensitive screen	Standard
	Westomatic branded menu system	Standard
	Wheelchair access - buttons available below 1.2 metres	Standard
	Bespoke branded menu	Optional
Water filter	Specify 3M or Brita kit & filter (to reduce scale build-up)	Optional
Jug	Thermal stainless steel jug	Optional
Lid holder	Stainless steel lid holder (external fitting)	Optional
Lock	3 position lock & 2 keys	Standard
Payment system	Coin and / or cashless payment system	Optional
	Lockable cash box	Optional
Graphics	Sigma style acrylic door Westomatic graphic	Standard
	Bespoke decals	Optional
Dex Control Board	Data acquisition if using multiple payment methods	Optional

DIMENSIONS

Height (mm)	1830
Width (mm)	710
Depth (mm)	765
Minimum sitting distance from back wall to rear of cabinet (mm)	100
Weight (kg approx)	165

CUP CAPACITY (9oz/12oz)

Cups	479 / 510
------	-----------

CAPACITY (APPROXIMATELY FOR A 9oz DRINK)

Beans (Gram Throw 9g)	2000g/222 drinks
Leaf Tea (Gram Throw 2.5g)	3500g/1480 drinks
Milk Powder (Gram Throw 4g - flat white)	3200g/800 drinks
Chocolate (Gram Throw 20g)	2450g/115 drinks
Sugar	3900g
Instant Coffee (Gram Throw 1.2g)	1200g/837 drinks

ELECTRICAL SERVICES & RATINGS - POWER

Voltage (Volts AC + / - 10%)	230 - 240
Current (amps)	13
Frequency (Hz)	50

ENERGY CONSUMPTION

Idle Phase (watt hrs / hr)	120
EVA / EMP Rating	

WATER REQUIREMENTS

Pressure	138 kpa (1.37 Bar) min - 828 kpa (8.27 Bar) max
Supply	15 mm BSP from rising main with a stop tap

LANGUAGE AND ACCESSIBILITY

The Sigma Touch offers a range of language options including French, German, Spanish, Polish and Russian as standard. As well as wheelchair accessibility options making the machines easier to use at an appropriate height.

